

**HARRISON**  
JUNIOR  
SCHOOL

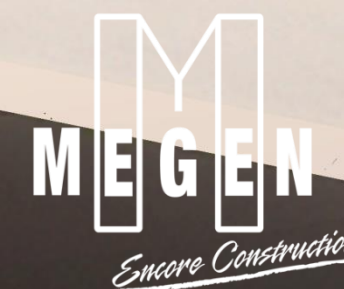
# SOUTHWEST LOCAL SCHOOLS COMMUNITY UPDATE



OHIO FACILITIES CONSTRUCTION COMMISSION



**SKANSKA**





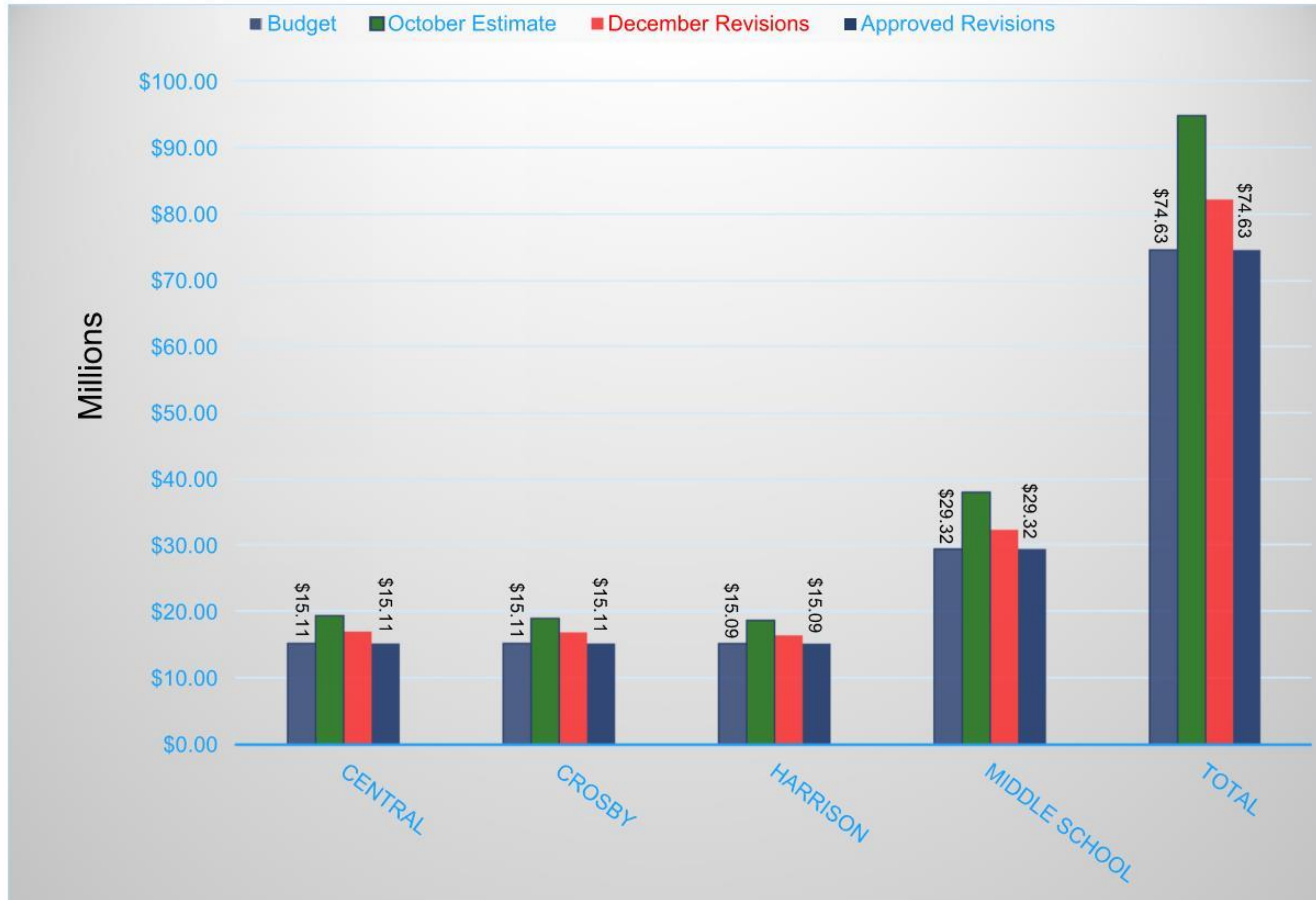
# AGENDA

- **WHAT'S BEEN GOING ON?**
- **SCHEDULE + BUDGET**
- **HARRISON HIGH SCHOOL: PLANNED PHASED IMPROVEMENTS**
- **SITE PLAN REVIEWS**
- **ELEMENTARY PLAN REVIEW**
- **ELEMENTARY INTERIOR + EXTERIOR ANIMATION**
- **JUNIOR SCHOOL PLAN REVIEW**
- **JUNIOR SCHOOL INTERIOR + EXTERIOR ANIMATION**
- **Q+A**

# SCHEDULE

- **COMPLETED SCHEMATIC DESIGN PHASE (1 OF 3)**
- **OFCC POLICY: RECONCILE TO \$0 DELTA TO MOVE TO NEXT PHASE**
- **APPROX. 4-6 WEEK SCHEDULE ADJUSTMENT DUE TO RECONCILIATION**
- **END DATE / OCCUPANCY DATE DOES NOT CHANGE**
- **CURRENTLY IN DESIGN DEVELOPMENT PHASE (2 OF 3)**
- **MOVE DIRT SUMMER 2019**
- **GUARANTEED MAXIMUM PRICE PROCESS SUMMER / FALL 2019**
- **START BUILDING CONSTRUCTION FALL 2019**
- **COMPLETE BUILDING / CLOSEOUT SPRING 2021**
- **START SCHOOL IN NEW BUILDINGS FALL 2021**

# BUDGET – CO-FUNDED PROJECT





# HARRISON HIGH SCHOOL SUMMARY

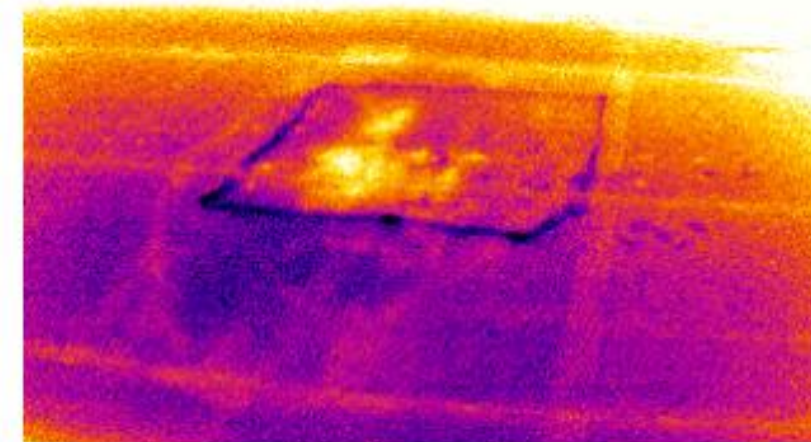
## WORK TO BE COMPLETED OVER 3 SUMMERS

Activities have been prioritized & conceptually estimated  
 Existing building plans have been computer-modeled  
 Envelope due diligence + planning well underway

## NOT PART OF OFCC / CO-FUNDED PROJECTS



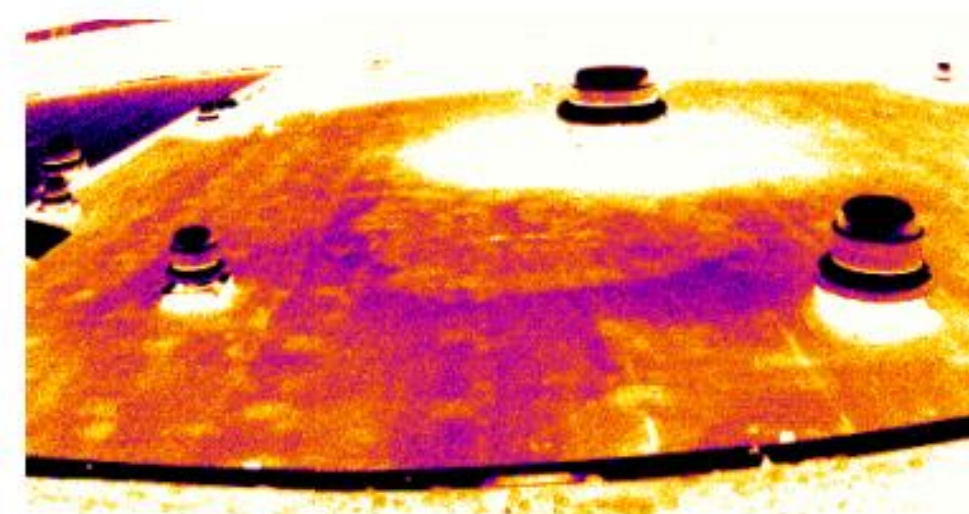
Visual image of area #1



Infrared view of area #1



Visual image of area #2

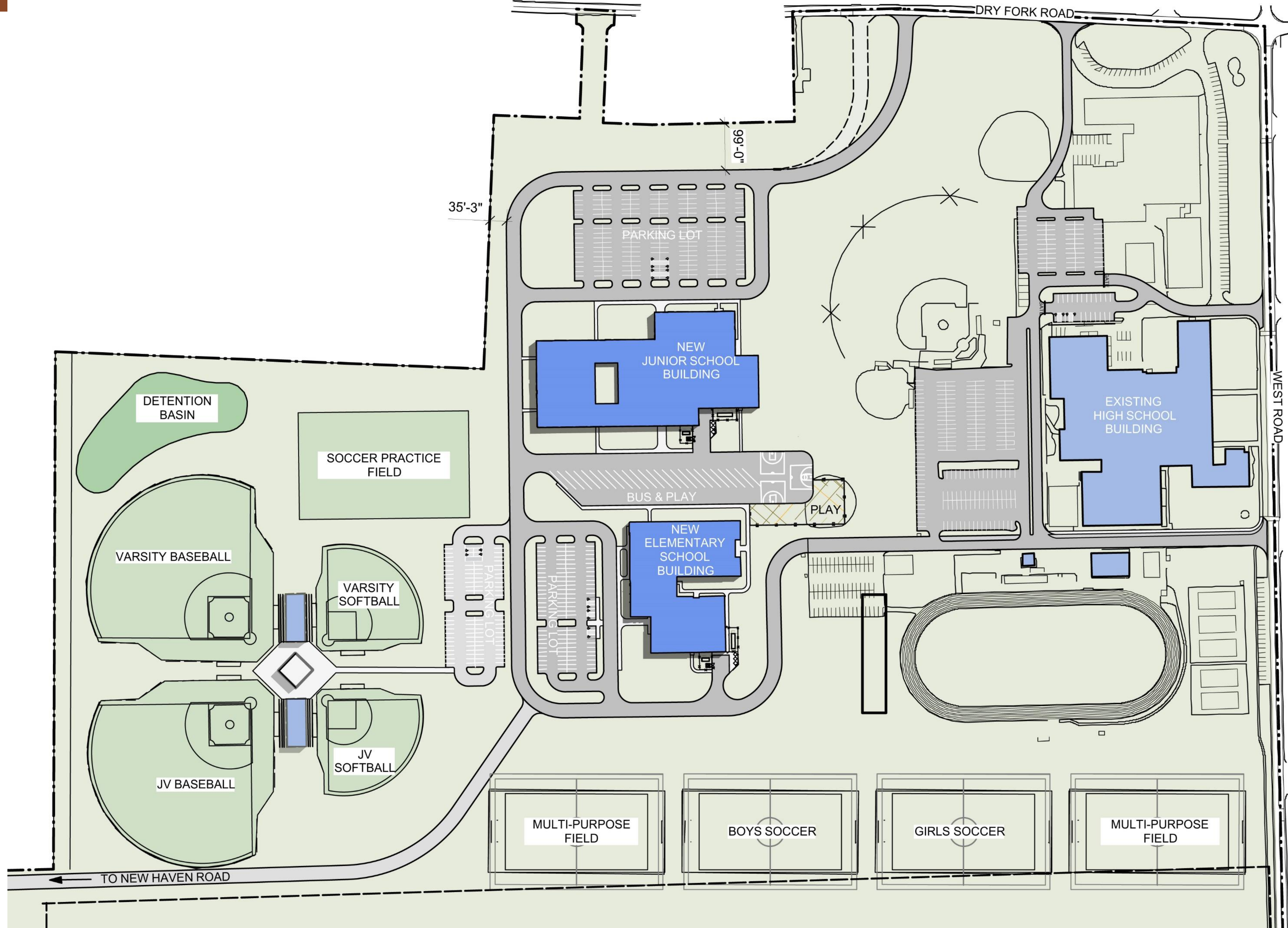


Infrared view of area #2 (Suspect Damp Insulation)

Harrison High School - Capital Improvements						
Year	ITEM	Estimated Cost	Priority 1 - Req'd	Priority 2 - Need	Priority 3 - Want	
2009	roofing replacement/repair	\$800,000	1	\$800,000	\$0	
2009	masonry repairs and tuck-pointing	\$250,000	1	\$250,000	\$0	
2009	Replace a majority of HVAC pumps	\$25,000	1	\$25,000	\$0	
2009	Replace existing original roof top units	\$45,000	1	\$45,000	\$0	
2009	Replace Water Heater (5-10 years)	\$20,000	1	\$20,000	\$0	
2009	security improvements - secure entries, cameras	\$170,000	1	\$170,000	\$0	
2009	renovate science labs (7 - chem and physics and bio)	\$124,000	1	\$124,000	\$0	
2009	upgrade/renovate restrooms - partitions, fixtures, finishes	\$38,000	1	\$38,000	\$0	
2009	replace ceilings throughout the 1988 building	\$50,000	1	\$50,000	\$0	
2009	refinish old gym floor	\$32,000	1	\$32,000	\$0	
2009	improve student flow/reduce congestion	\$100,000	1	\$100,000	\$0	
2009	replace exterior doors in 1988 building	\$58,000	1	\$58,000	\$0	
2009	replace storefront walls on north and east elevations	\$115,000	1	\$115,000	\$0	
2009	Upgrade Electrical Service	\$750,000	1	\$750,000	\$0	
2009	Upgrade Electrical Distribution	\$670,000	2	\$0	\$670,000	
2009	Partial Lighting Replacement (limited replace, lens allowance)	\$250,000	1	\$250,000	\$0	
2009	Upgrade Controls - so entire building on central system	\$350,000	1	\$350,000	\$0	
2009	address humidity issues	\$25,000	1	\$25,000	\$0	
2009	Investigate/resolve hot water distribution for showers / kitchen	\$20,000	1	\$20,000	\$0	
2009	AC old gym, art rooms, locker areas ( including exhaust)	\$445,000	1	\$445,000	\$0	
2009	Upgrade fire alarm system	\$300,000	1	\$300,000	\$0	
2011	Move office to east side of HS - separate AC system	\$400,000	1	\$400,000	\$0	
2011	Upgrade classroom casework	\$125,000	1	\$125,000	\$0	
2011	painting and flooring allowance	\$150,000	1	\$150,000	\$0	
2011	New welding/electrical/small engine area	\$180,000	2	\$0	\$180,000	
2011	Existing MC - address ADA, awning drainage, etc	\$22,000	1	\$22,000	\$0	
2011	Athletic improv. Locker room, single showers, training, laundry	\$150,000	1	\$150,000	\$0	
2011	Convert teachers lounge to work room	\$20,000	1	\$20,000	\$0	
2011	CA/M/Commons renov	\$217,000	1	\$217,000	\$0	
2011	site improvements - paving/concrete walk replacement/repair	\$400,000	1	\$100,000	\$300,000	
2011	Technology System Upgrade Allowance	\$1,100,000	2	\$0	\$1,100,000	
2011	Phones in classrooms/PA system	\$150,000	2	\$0	\$150,000	
2011	general tech upgrade (150,000 to \$1,000,000)	\$500,000	2	\$0	\$500,000	
2011	upgrade loose furnishings	\$250,000	1	\$200,000	\$50,000	
2011	asbestos abatement (allowance)	\$200,000	2	\$0	\$200,000	
2011	Partial Lighting Replacement (limited replace, lens allowance)	\$250,000	2	\$0	\$250,000	
TRD	New maker space	\$180,000	3	\$0	\$180,000	
TRD	Improvements to Engineering/Robotics	\$50,000	3	\$0	\$50,000	
TRD	Secure outdoor Senior lunch area	\$30,000	3	\$0	\$30,000	
TRD	provide acoustic panels in sus gym, media, cafeteria and music	\$45,000	3	\$0	\$45,000	
TRD	Senate Room for small assemblies (in MCT)	\$220,000	3	\$0	\$220,000	
TRD	Music expansion (MCT)	\$26,500	3	\$0	\$26,500	
TRD	replace windows in 1988 bldg	\$120,000	3	\$0	\$120,000	
TRD	Add Emergency Generator System	\$300,000	3	\$0	\$300,000	
TRD	Upgrade Electrical Branch Circuits	\$500,000	3	\$0	\$500,000	
TRD	Remove Old Boiler (shut down in place)	\$25,000	3	\$0	\$25,000	
TRD	Partial Lighting Replacement (limited replace, lens allowance)	\$300,000	3	\$0	\$300,000	
TRD	Partial replace ceilings 1988 building	\$75,000	3	\$0	\$75,000	
TRD	site improvements - paving/concrete walk replacement/repair	\$0	3	\$0	\$0	
<b>TOTAL</b>		<b>\$11,240,100</b>		<b>\$5,681,448</b>	<b>\$3,180,000</b>	<b>\$2,478,652</b>
<b>SUMMARY</b>						
TOTAL COST/ESTCH			Priority 1	Priority 2	Priority 3	
Total estimated construction cost		\$11,240,100	\$5,681,448	\$3,180,000	\$2,478,652	
Recommended contingency (4%)		\$449,604	\$224,864	\$124,000	\$90,740	
Soft cost (1.2%)		\$1,400,516	\$700,244	\$385,000	\$315,312	
<b>TOTALS</b>		<b>\$13,080,220</b>	<b>\$6,584,148</b>	<b>\$3,610,880</b>	<b>\$2,885,792</b>	

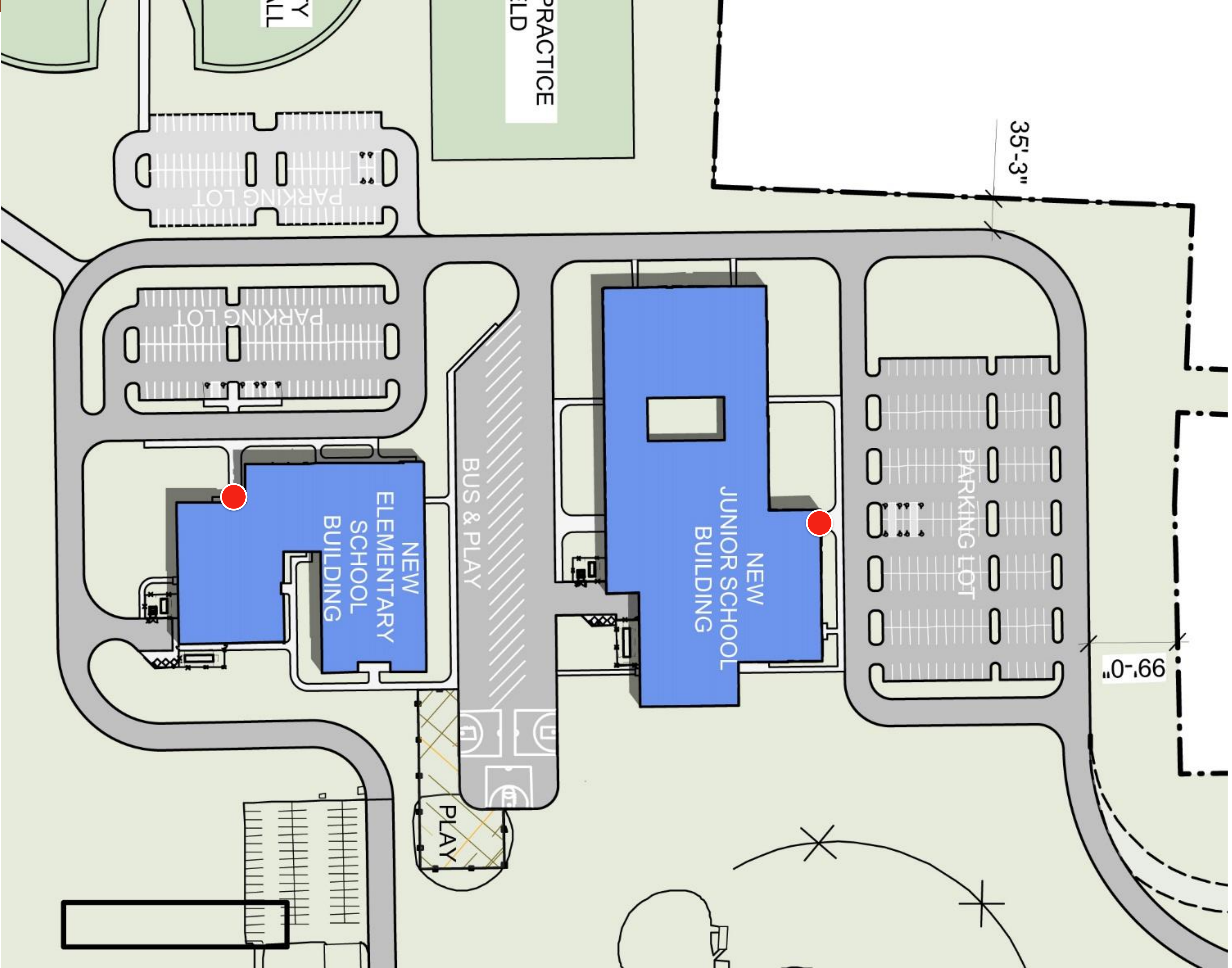


# CENTRAL SITE





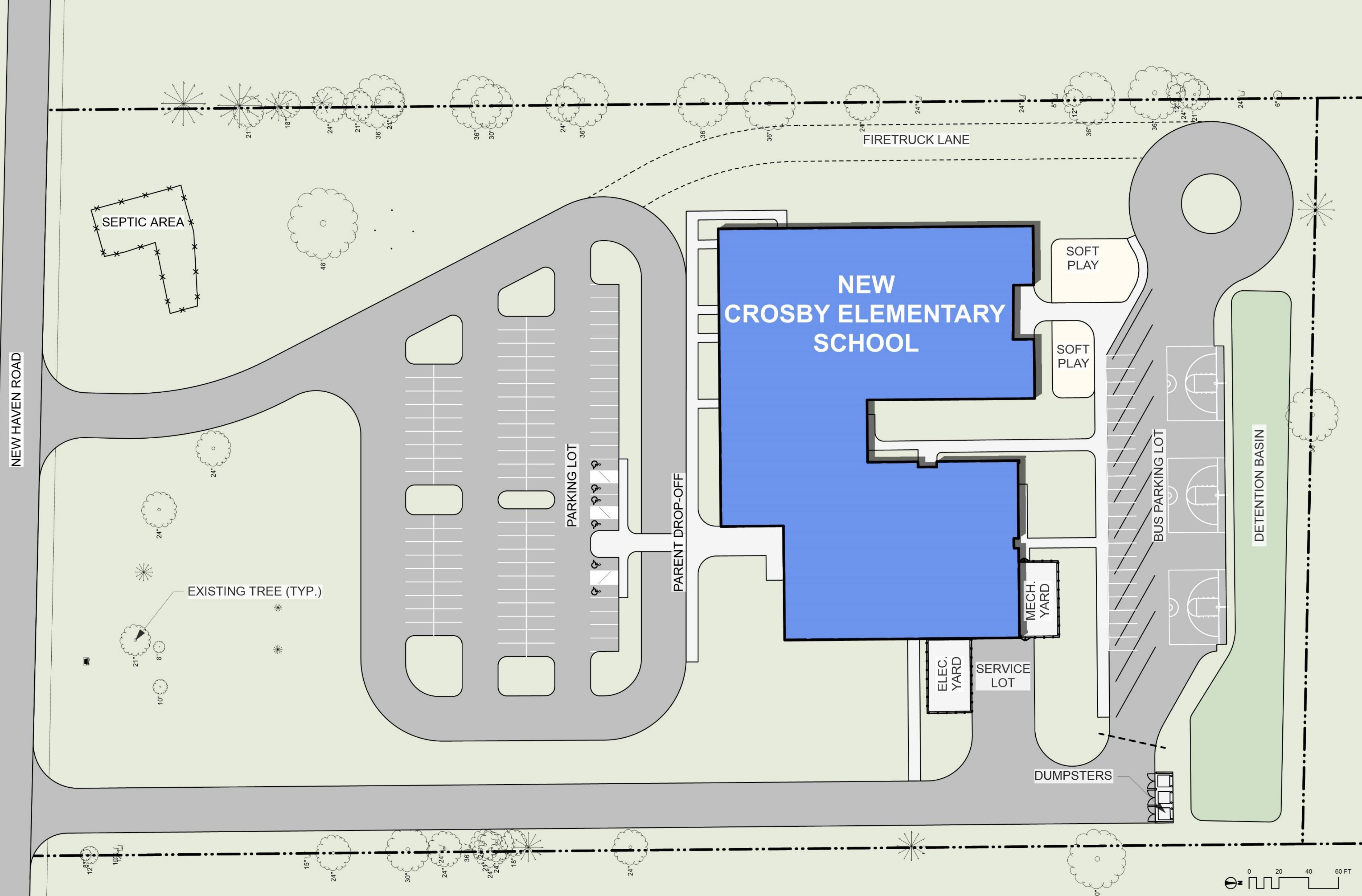
# CENTRAL SITE



DRY FORK

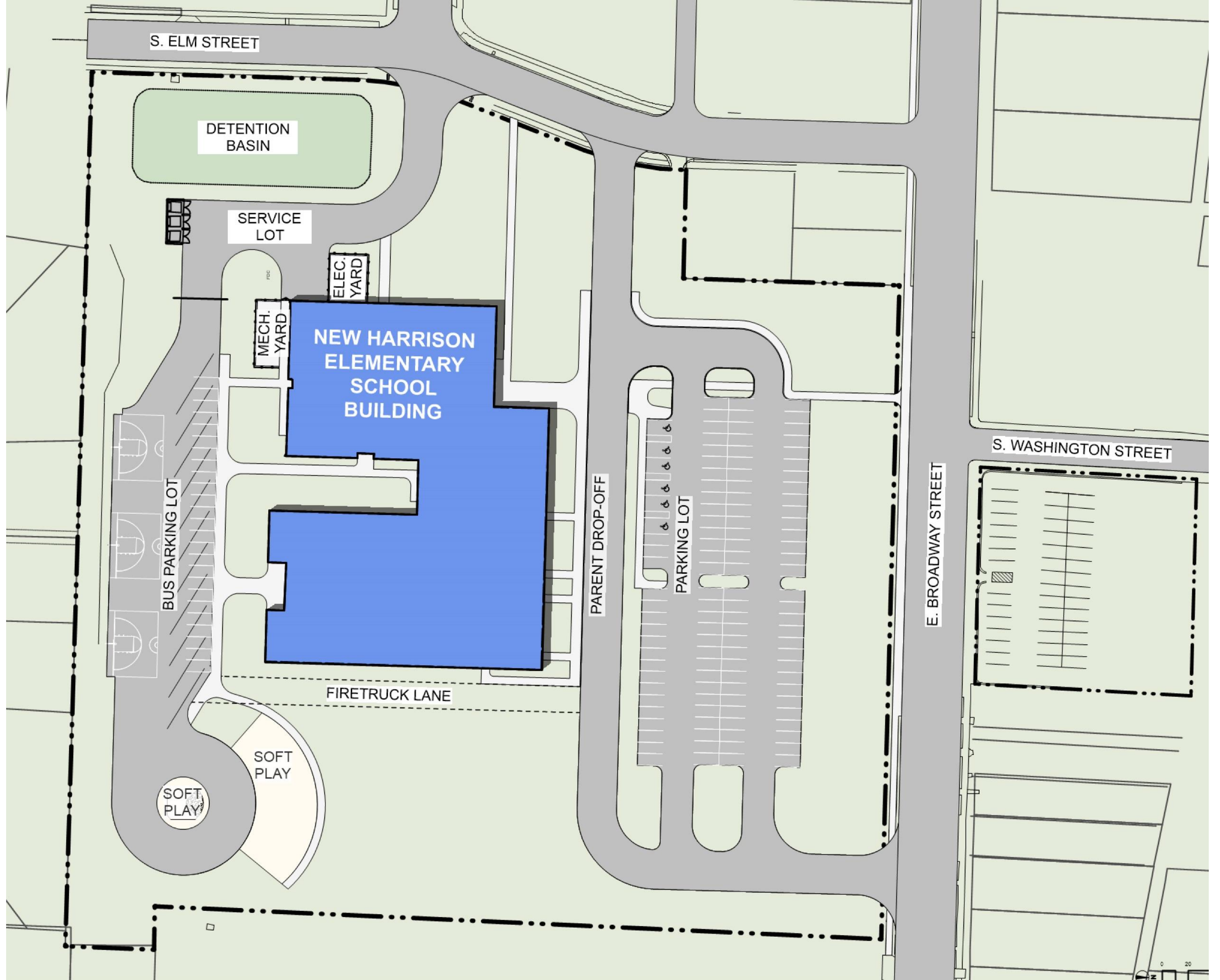


# CROSBY SITE





# HARRISON SITE





# CROSBY & HARRISON

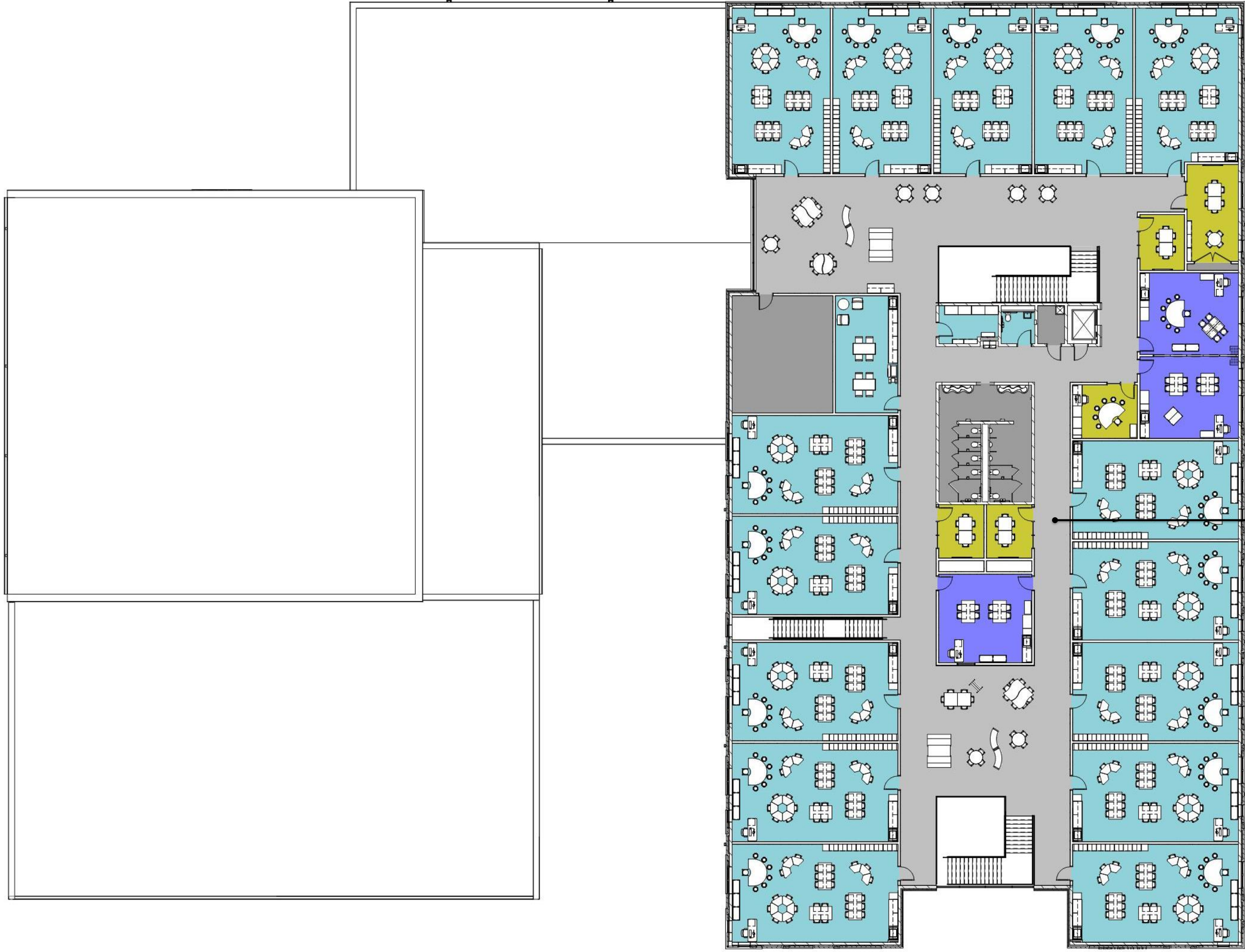
## 1ST FLOOR





# CROSBY & HARRISON

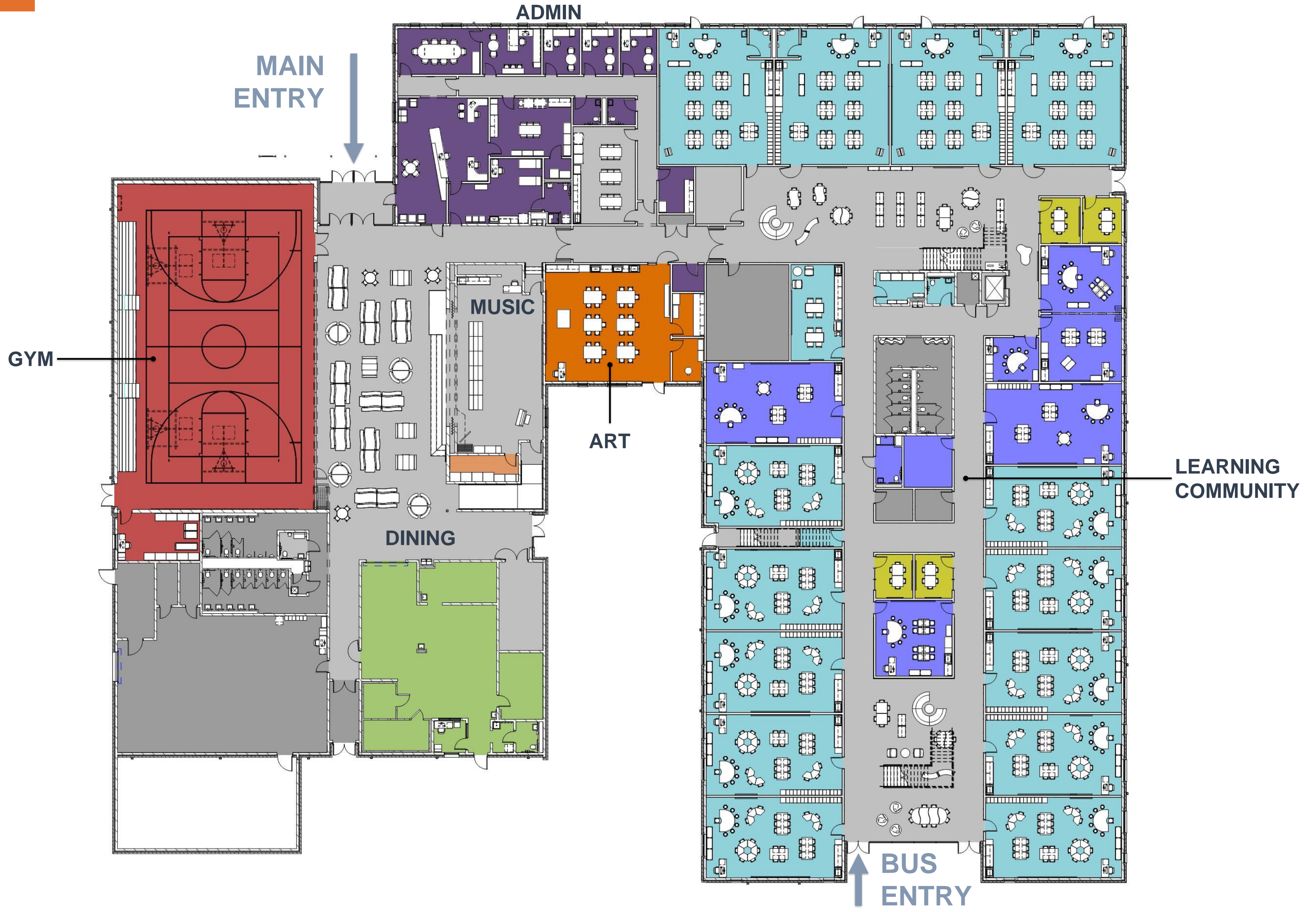
## 2ND FLOOR



LEARNING  
COMMUNITY



# CENTRAL 1ST FLOOR





# CENTRAL 2ND FLOOR



LEARNING  
COMMUNITY





WELCOME TO  
HARRISON ELEMENTARY







# Junior School

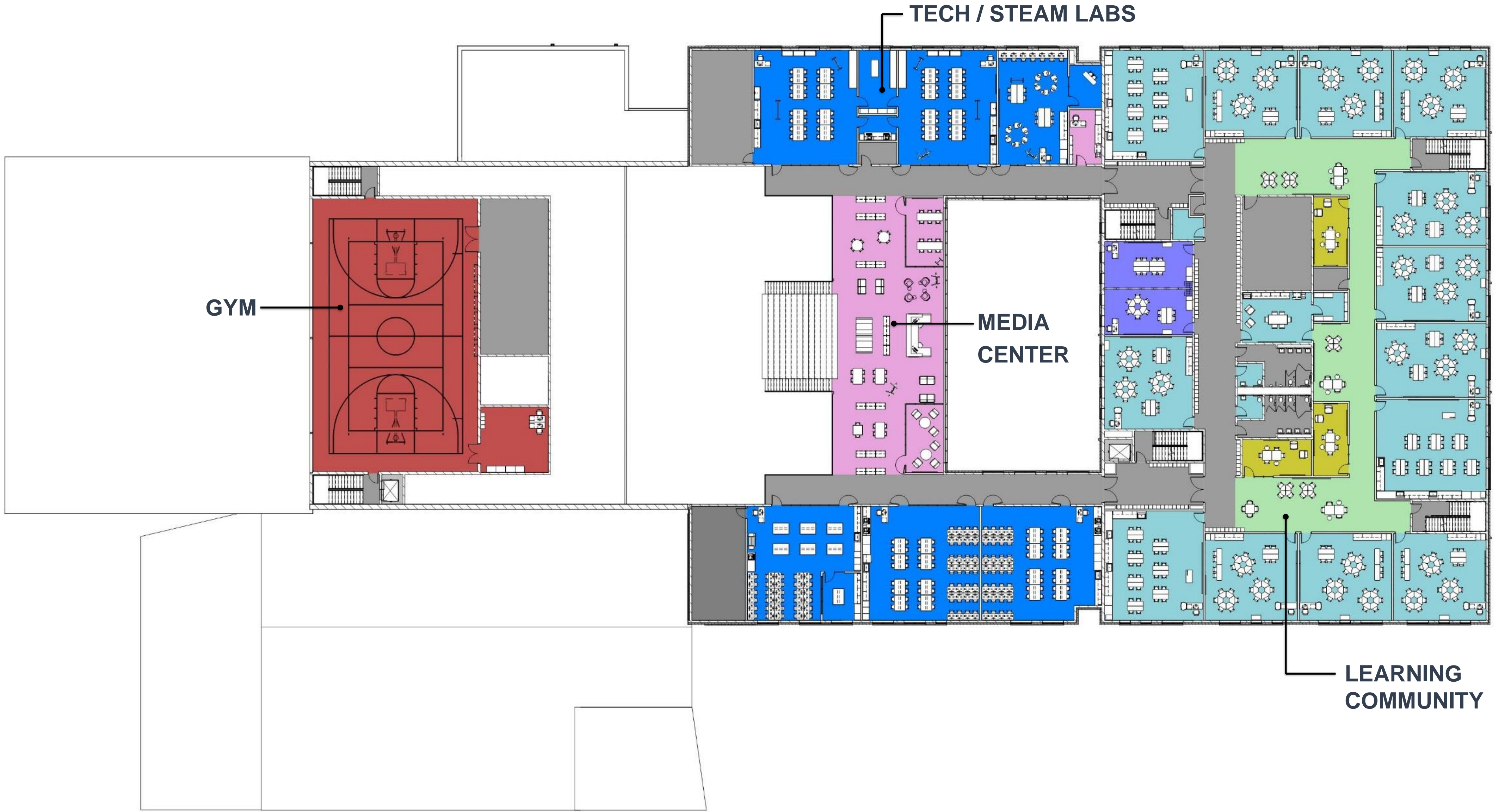
## 1st FLOOR





# Junior School

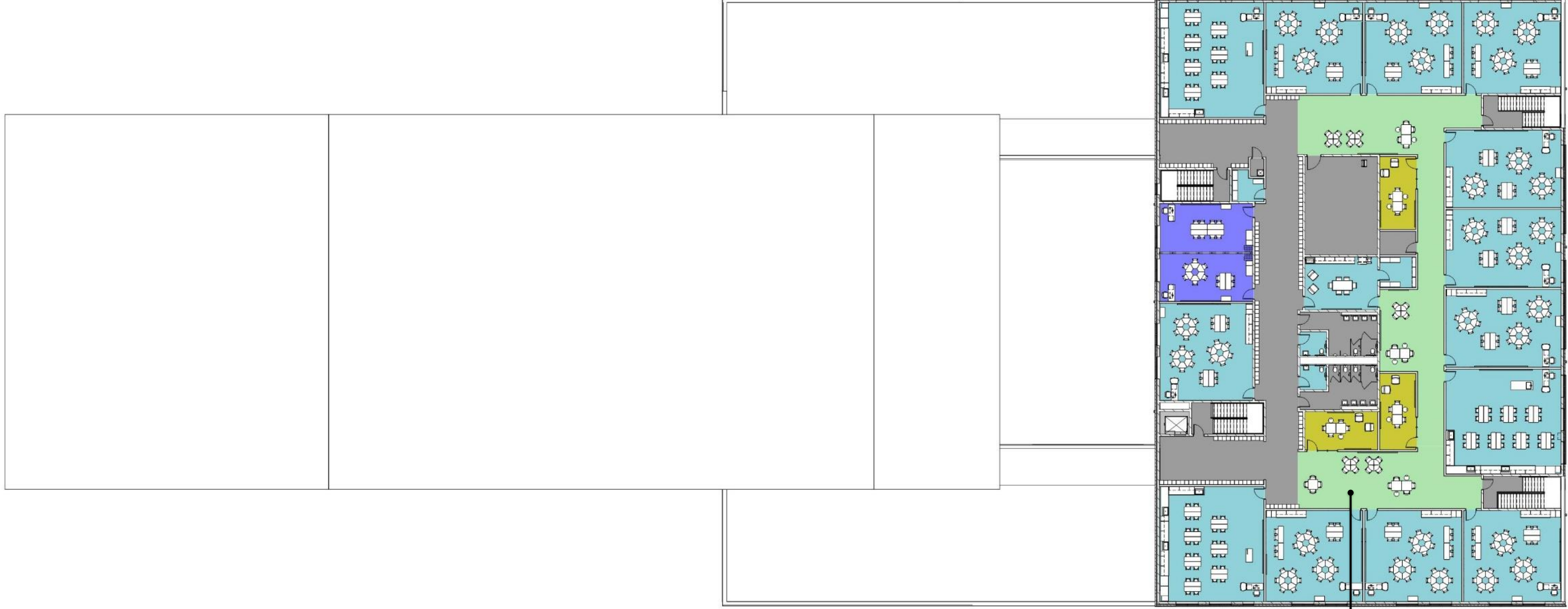
## 2nd FLOOR





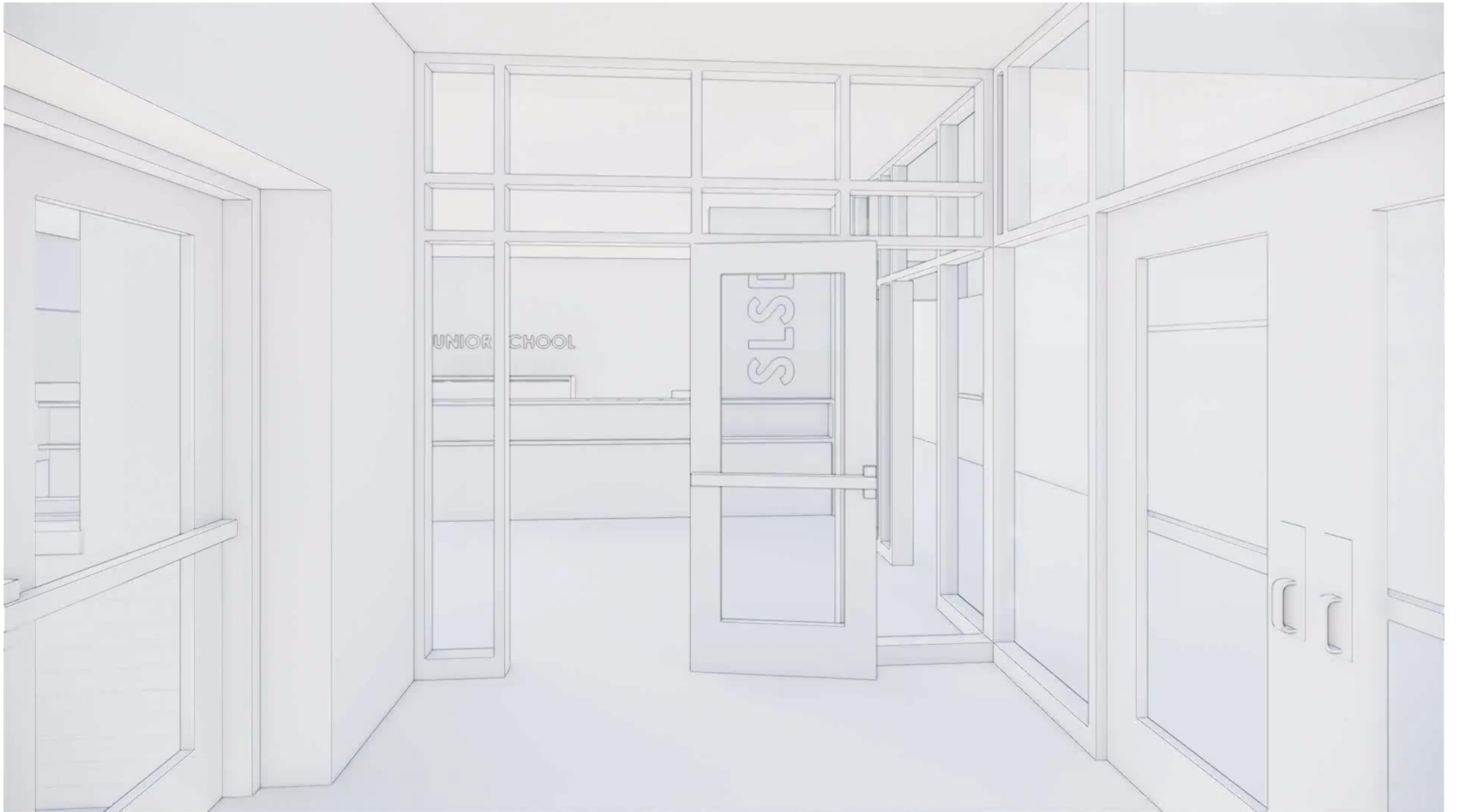
# Junior School

## 3rd FLOOR



LEARNING  
COMMUNITY











# WHAT'S NEXT?

- **INTERIOR DESIGN DEVELOPMENT**
  - **COLOR SCHEME ESTABLISHED**
  - **MATERIAL SELECTION**
  - **DESIGN DETAILS DEVELOPED**
  - **FOCUS ON SPECIALTY SPACES**
- **CONTINUE OVERALL TECHNICAL DOCUMENTATION EFFORTS**
- **COORDINATION WITH MEP/T, STRUCTURAL, CIVIL ENGINEERS**
- **MEETINGS W/ LOCAL AGENCIES HAVING JURISDICTION**



# THANK YOU!

**HARRISON**  
JUNIOR  
SCHOOL

# Q+A

**OFCC**  
OHIO FACILITIES CONSTRUCTION COMMISSION



**SKANSKA**



**SHP**





**Junior School**

**Parking Lot View**





**Junior School**

**Entry View**





**ELEMENTARY SCHOOL**

**BIRD'S EYE VIEW**





ELEMENTARY SCHOOL

FRONT VIEW





**ELEMENTARY SCHOOL**

**ENTRY VIEW**